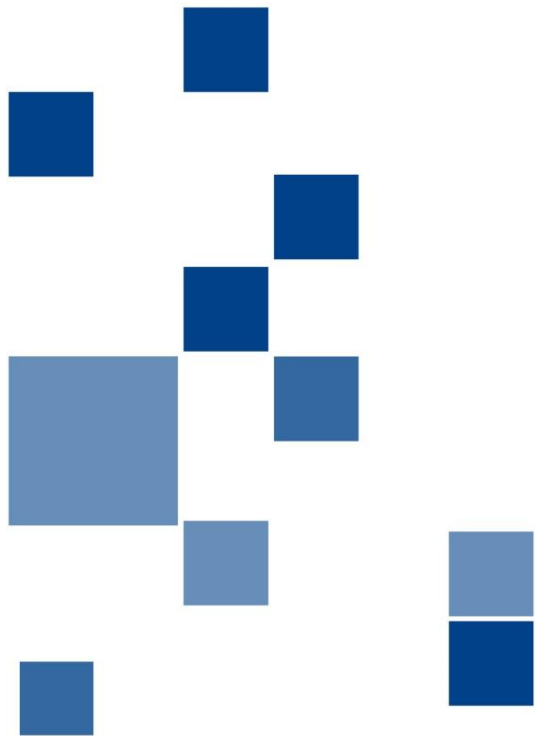


Key Fitness to Practise statistics July 2023



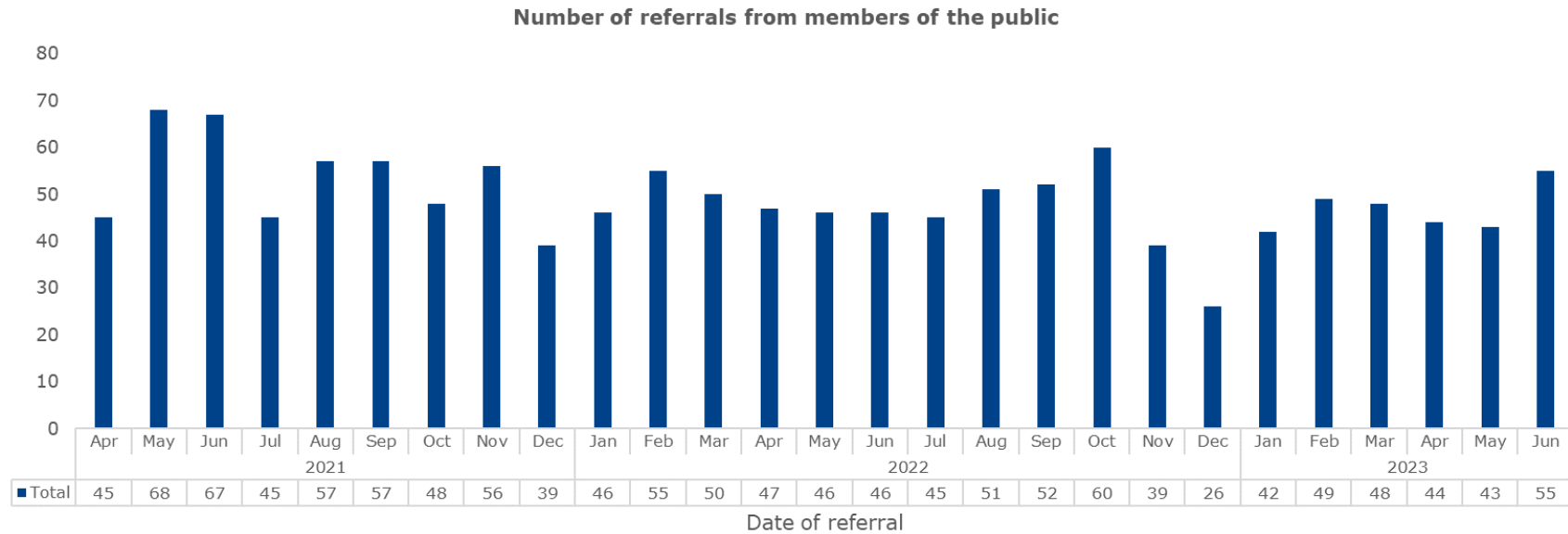
1. Number of referrals

Number of Referrals to Fitness to Practise



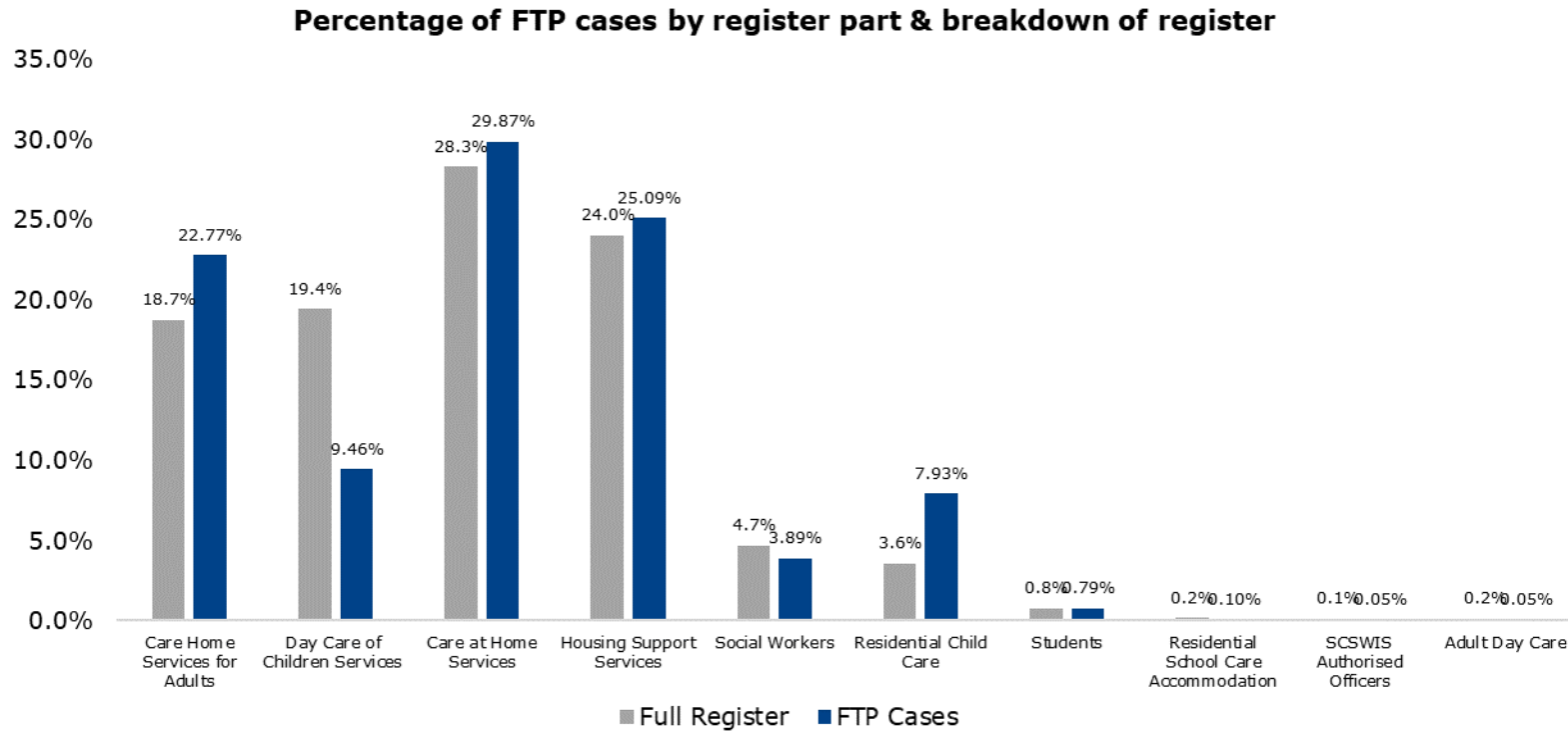
The chart above shows the number of referrals received month on month by the Fitness to Practise Department, including those that are not opened for investigation. Applicant cases are where a person is currently applying for registration and registrant cases are where someone is already registered with the SSSC.

2. Number of referrals from members of the public



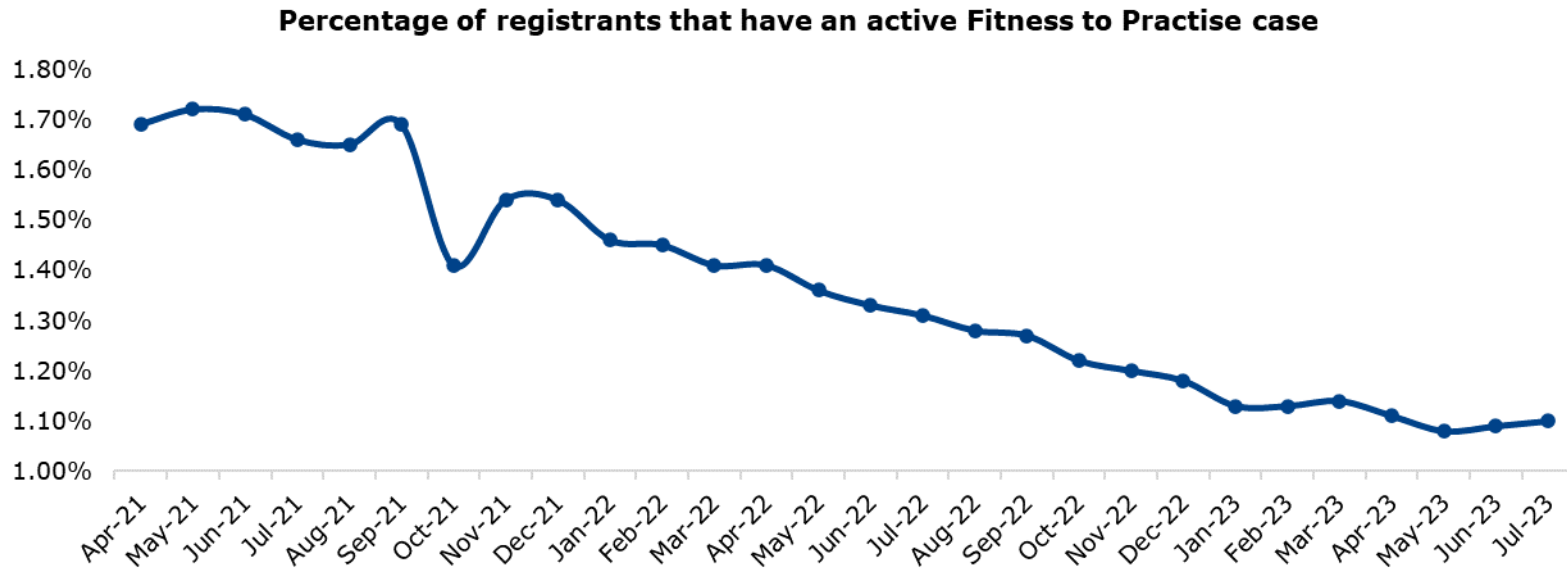
The chart above shows the monthly number of referrals received by the SSSC Fitness to Practise Department from members of the public. These include anonymous referrals, referrals from a service user, referrals from a carer/family member of a service user, referrals from members of the public who are not connected to the worker or the service user but have witnessed a behaviour, and referrals from colleagues.

3. What proportion of our fitness to practise referrals relate to each register part?

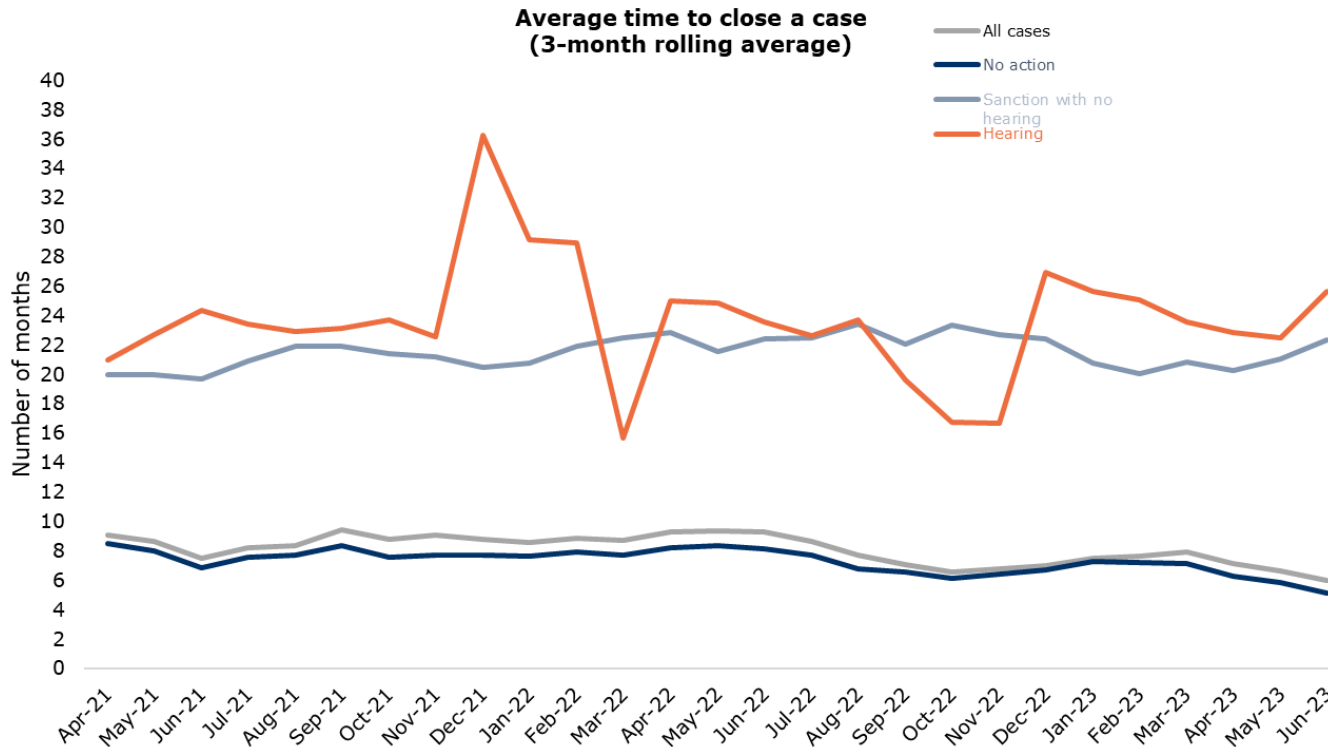


1.10% of registrants currently have a referral being considered by the Fitness to Practise Department. The chart shows what percentage of fitness to practise cases come from each register part. There are currently 23 register parts, however for this chart some of the register parts have been grouped together, for example 'Residential Child Care' groups together Residential Child Care Workers, Supervisors in a Residential Child Care Service and Managers in a Residential Child Care Service. These figures reflect the number of registrations rather than the unique individuals. We record all registrations because individuals can be registered on more than one register subpart, however they only have one fitness to practise case.

This chart shows the changes in the percentage of registrants who are an active fitness to practise investigation. We work to target our investigations to those issues which merit regulatory intervention.



4. How long does it take to conclude a fitness to practise investigation?



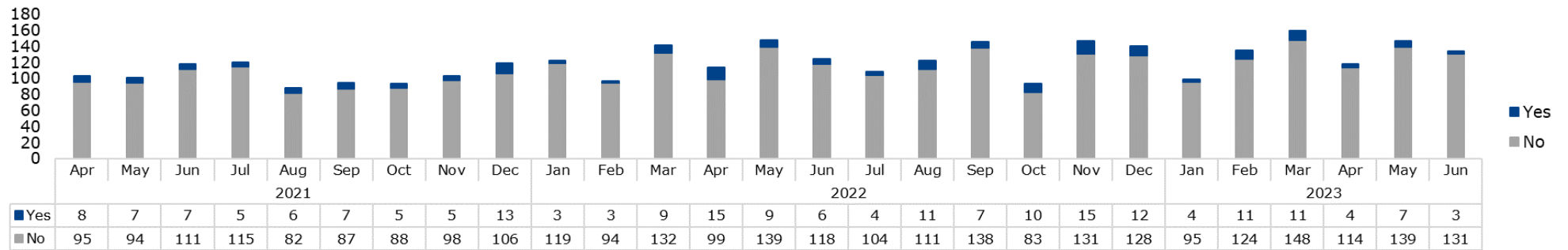
The chart above breaks down the average time to close a fitness to practise investigation from the date it was referred to the SSSC to the date it concluded. This includes referrals we receive that are not opened for investigation.

Considering a three-month rolling average in the chart, the length of time we take to close a case is 6.0 months.

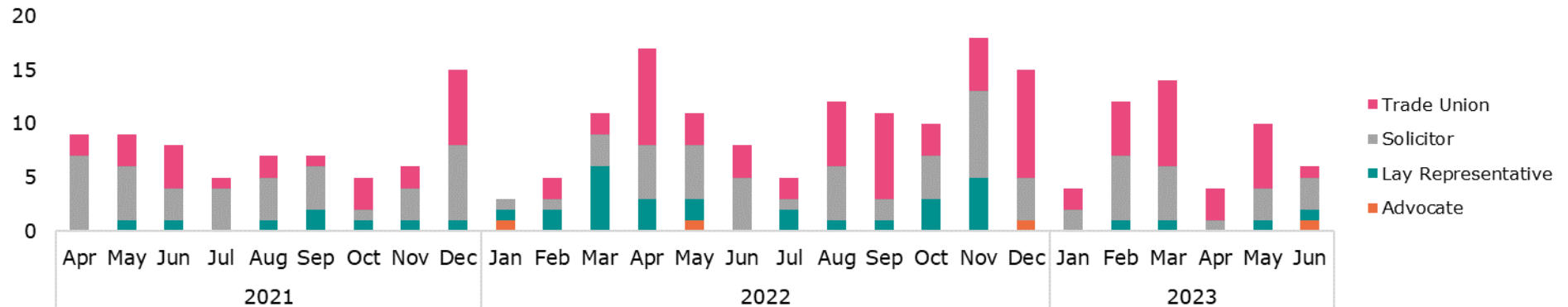
The average length of time to close a case is affected by a range of variables such as the number of referrals, the complexity of cases, staffing levels, etc. This measure differs from other reporting, such as the Annual Report and Accounts, as it uses a 3-month rolling average.

5. Types of representatives in closed Fitness to Practise cases

Was the worker represented?

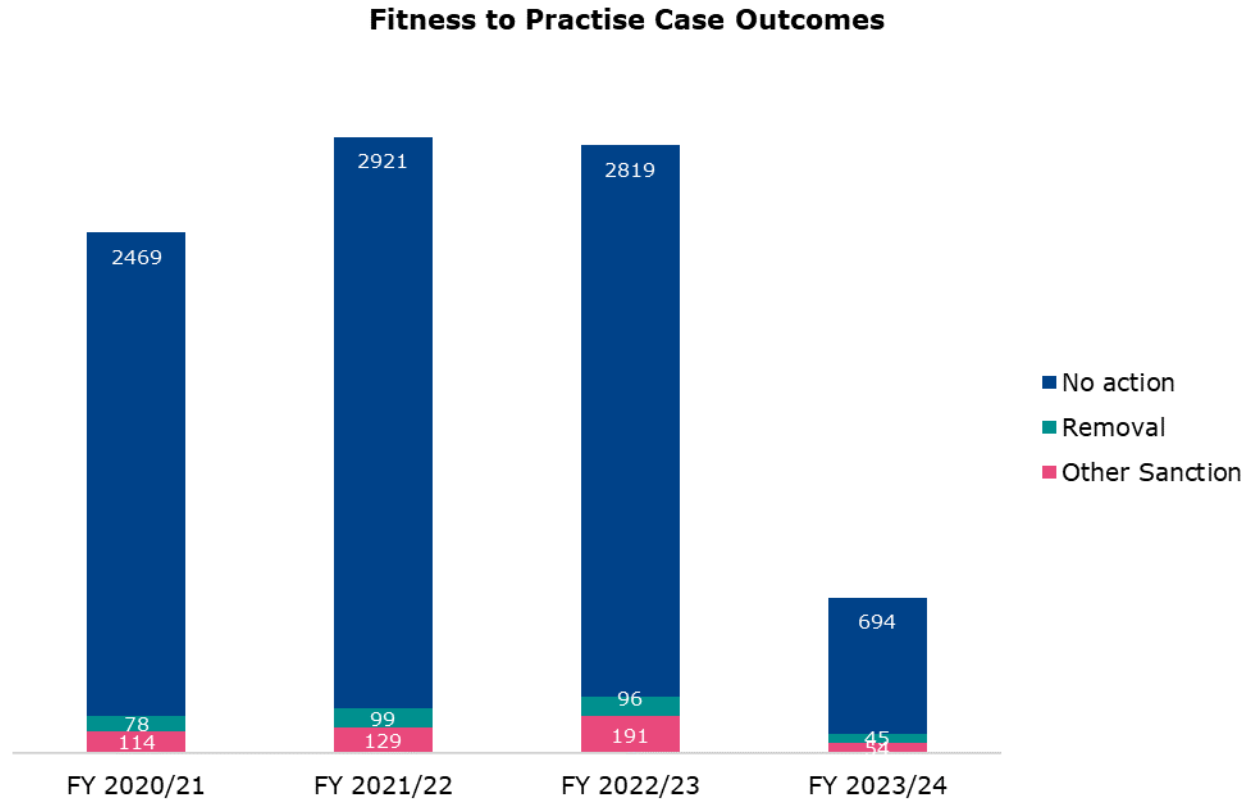


Representative type for closed Fitness to Practise cases

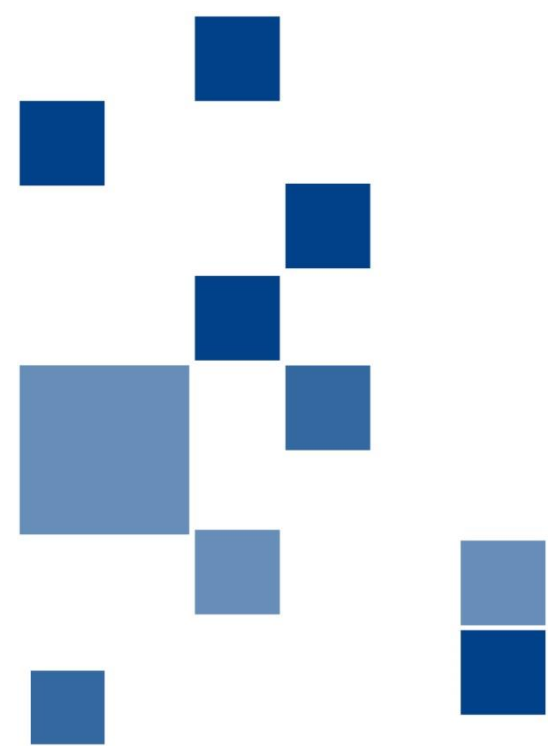


The charts above show the monthly figures for the number of workers who have had representation and the types of representatives for cases closed where a worker has had a representative.

6. What are the outcomes of fitness to practise cases?



The type of outcome of a case reflects the seriousness of the behaviour. Most registered worker's cases conclude with no action taken. 'Other sanction' includes where a warning, condition or suspension has been added to the person's registration, and 'Removal' is where a person is removed from the register for a period of three years. If after this time they want to re-join the sector, they need to apply for restoration to the register.



If you have any questions about this document or would like further information on the SSSC's performance, please email performanceandimprovement@sssc.uk.com.

Scottish Social Services Council
Compass House
11 Riverside Drive

Dundee
DD1 4NY

Tel: 0345 60 30 891
Email: enquiries@sssc.uk.com
Web: www.sssc.uk.com

If you would like this document in another format,
please contact the SSSC on 0345 60 30 891

© Scottish Social Services Council 2023