

The Economic Value of the Adult Social Care Sector in Scotland

£3.4bn

Estimated Gross Value Added (GVA) of adult social care in Scotland



148,000

people work in adult social care in Scotland



162,000

people work in the whole NHS in Scotland



of the total workforce work in adult social care

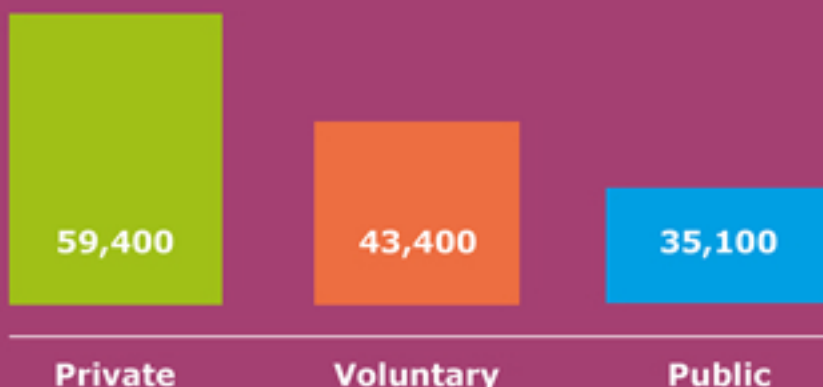


biggest employment sector in terms of number of jobs

44%

The number of people aged 65 or over is expected to grow by 44% by 2039 which is expected to drive further demand for adult social care

Number of jobs in regulated services per provider type



£

7,500

people received direct payments for their care



2,200*

of them directly employ Personal Assistants

*estimated

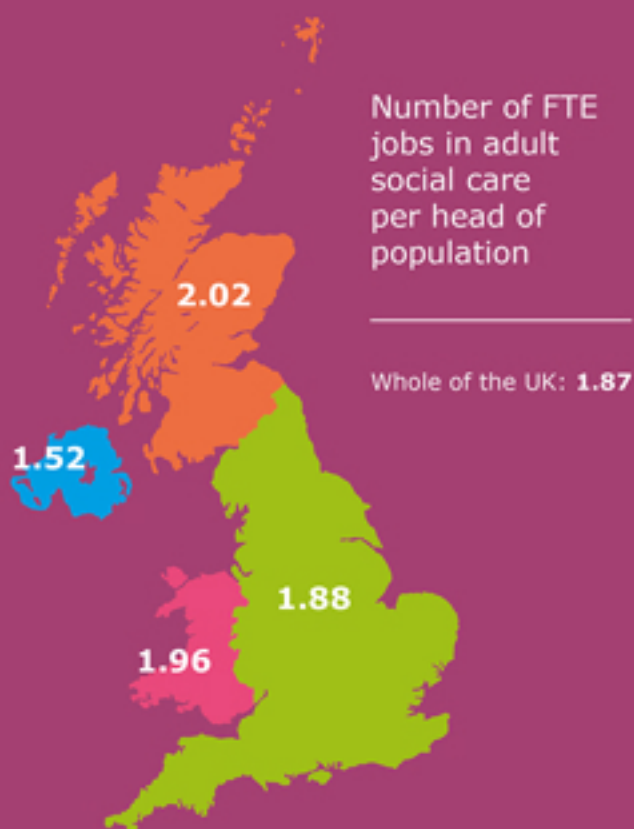
£18,400

Average earnings in the sector per FTE

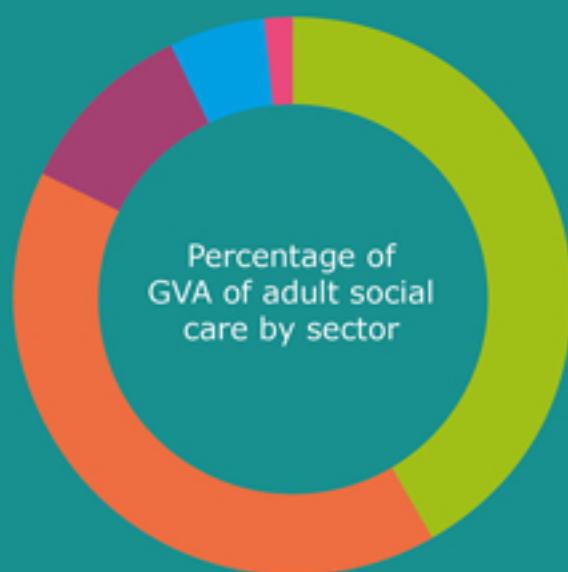
Scottish Living Wage

£16,835

Number of FTE jobs in adult social care per head of population



Percentage of GVA of adult social care by sector



- ★ Residential care 42%
- ★ Care at home 40.5%
- ★ Other services 10%
- ★ Day care 5.5%
- ★ Personal Assistants 2%